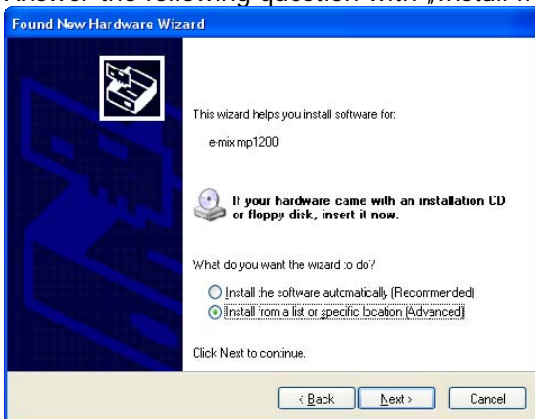


e-mix mp1200 driver installation

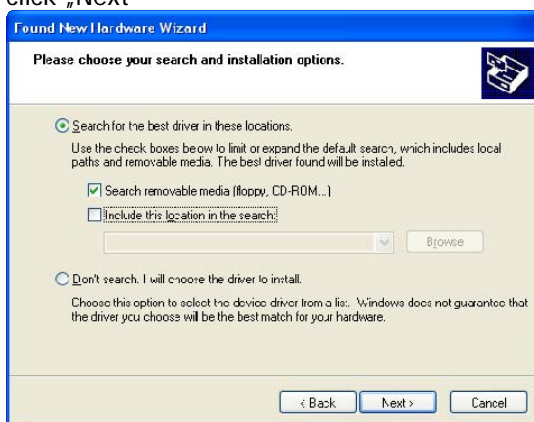
1. Connect your mp1200 console with your PC by USB and wait for the Windows Hardware Wizard. This may take a little time depending on your computer.
2. Answer the following questions with „No, not this time“ and click „Next“



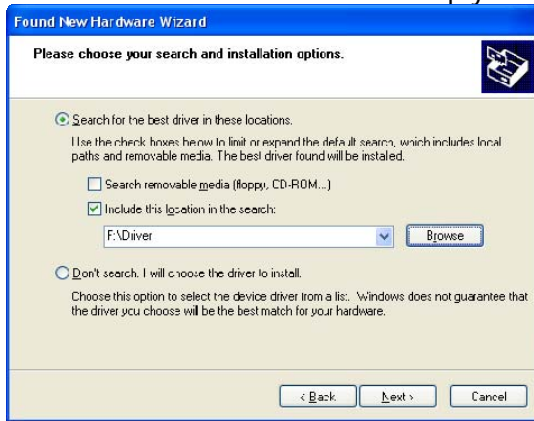
3. Answer the following question with „Install from a list or specific location“ and click „Next“



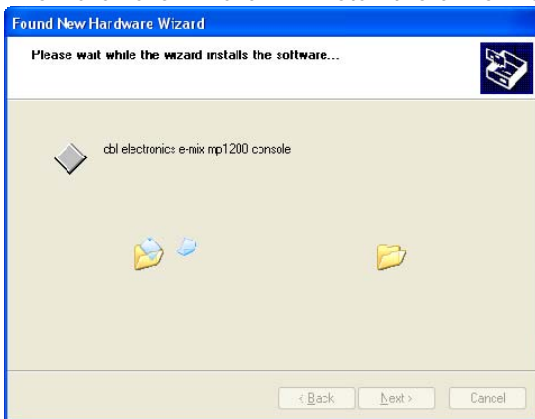
4. Go on with point a) if you got the driver on our e-mix product CD. Go on with point b) if you have downloaded the driver from our web page.
 - a. Insert the e-mix product CD into the CD drive of your computer. Choose the following settings and click „Next“



- b. Extract the drivers ZIP file into an empty folder, browser this folder and click „Next“



5. The Hardware Wizard will install the driver now



6. If you get the following dialog box during installation, please click „Continue Anyway“



7. The e-mix mp1200 console driver is now installed and ready to use with e-mix software.

